

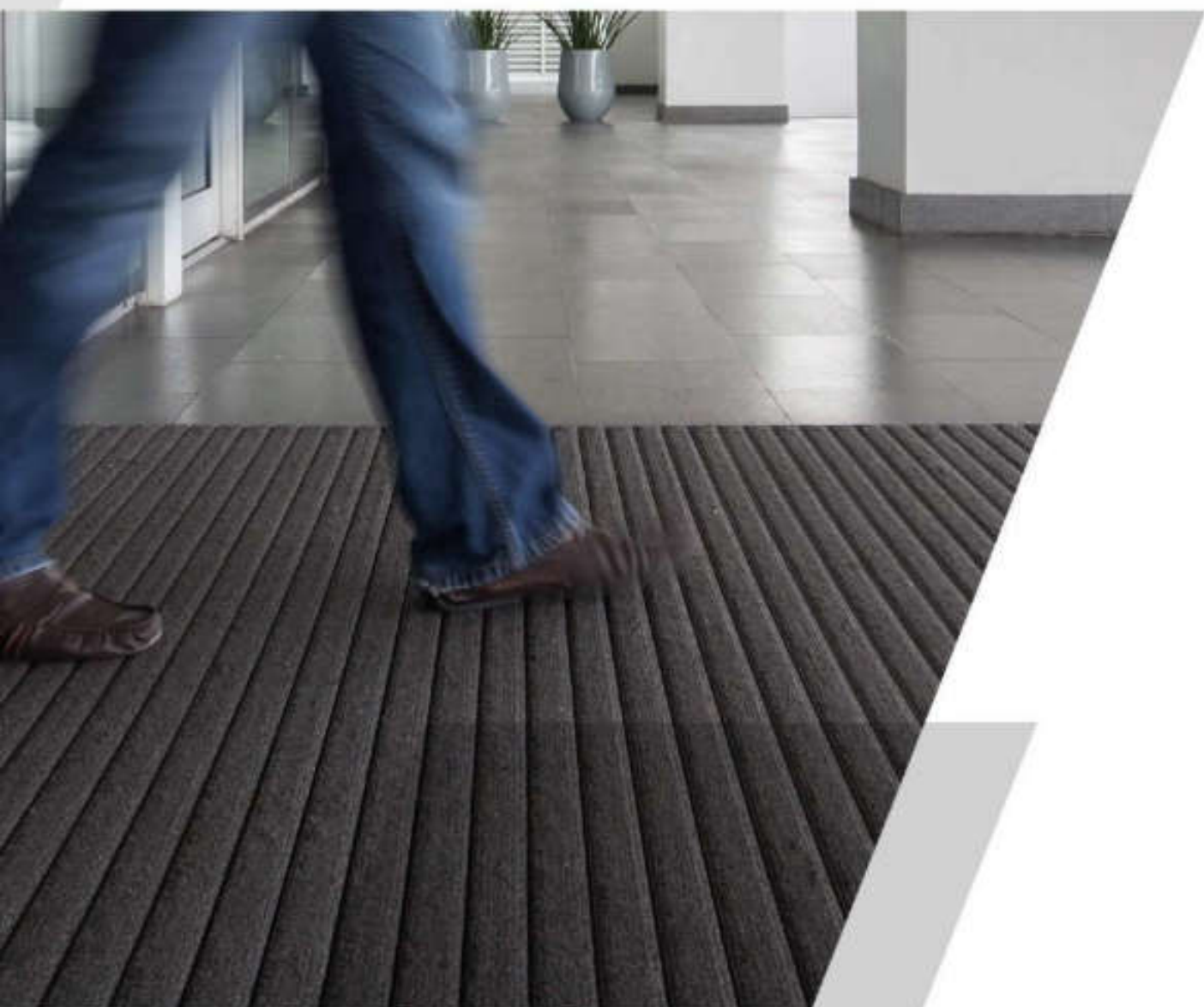
# CATALOGUE

2018-2019

INNOVIVA  
ENTRANCE MAT

# CONTENTS

Introduction	4
Commercial Building Products	5
Product Introduction	6
<b>ALUMAT</b>	
- Alumat ST-150	8
- Alumat HD-200	10
- Alumat Tread Option	12
- Alu Grid	14
- Aluminium Grating I-BAR	16
- Wedge Wire Stainless Grating	18
- Cast Iron Grating	20
Cleaning & Maintenance	22



# INNOMAT

## BACKGROUND



Inno Viva Company Limited is one of the Thailand's most progressive producer and importers of building material products, we are a fast growing company focus on delivering the best service and quality products to our customers. Presently we have several major projects in Thailand with particularly strength in Architectural products such as Mat Entrance, Expansion Joint Cover, Wall Protection and Louver. With strong experience in architectural products, we are developing products based on extensive survey of international and local market, in an effort to offer the best quality to our customers.



# COMMERCIAL

## BUILDING PRODUCTS



Inno Viva Company Limited is supplier and manufacturer of commercial building products, with our experienced in specialty construction items, we can minimize cost and time associated with the construction project workflow and provide the right solution to support our client.

# PRODUCT INTRODUCTION

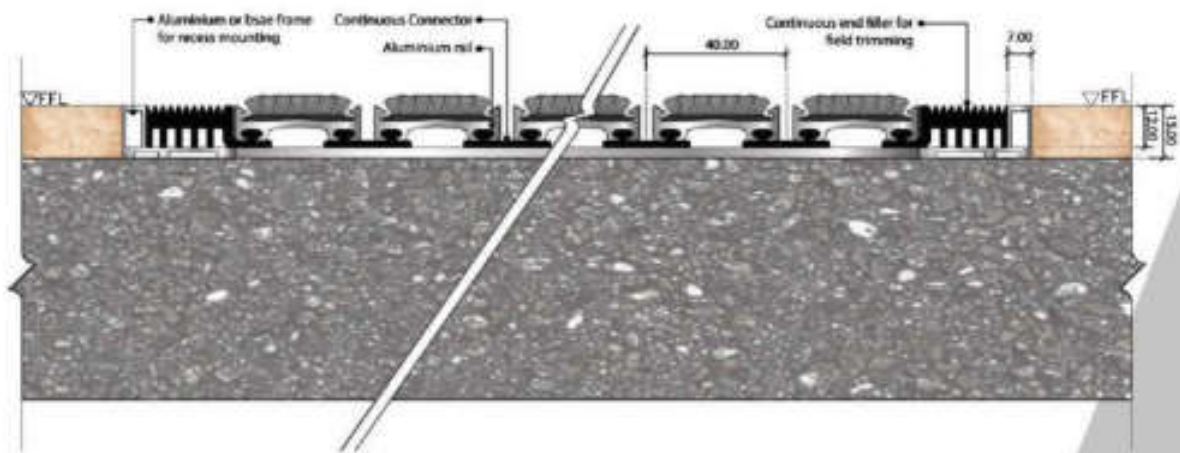
The Inno Viva Entrance Mat system is made of high quality aluminum alloy are equipped with superior inserts which designed to perfectly fit. It's designed to suit with any building with multifunction to reduce dust and soil under your feet, Inno Viva develop products based on extensive surveys therefore InnoMat is the right solution for the building.

InnoMat made from high quality material, we are provide two different type of tread insert: as carpet and synthetic rubber for multipurpose, the carpet insert made from Polypropylene(PP) with solution-dyed fabrics, making it a durable, long lasting flooring solution for entrance, for aluminium by designed to receive heavy workload of foot traffic and traffic and trolley for indoor/ outdoor work.









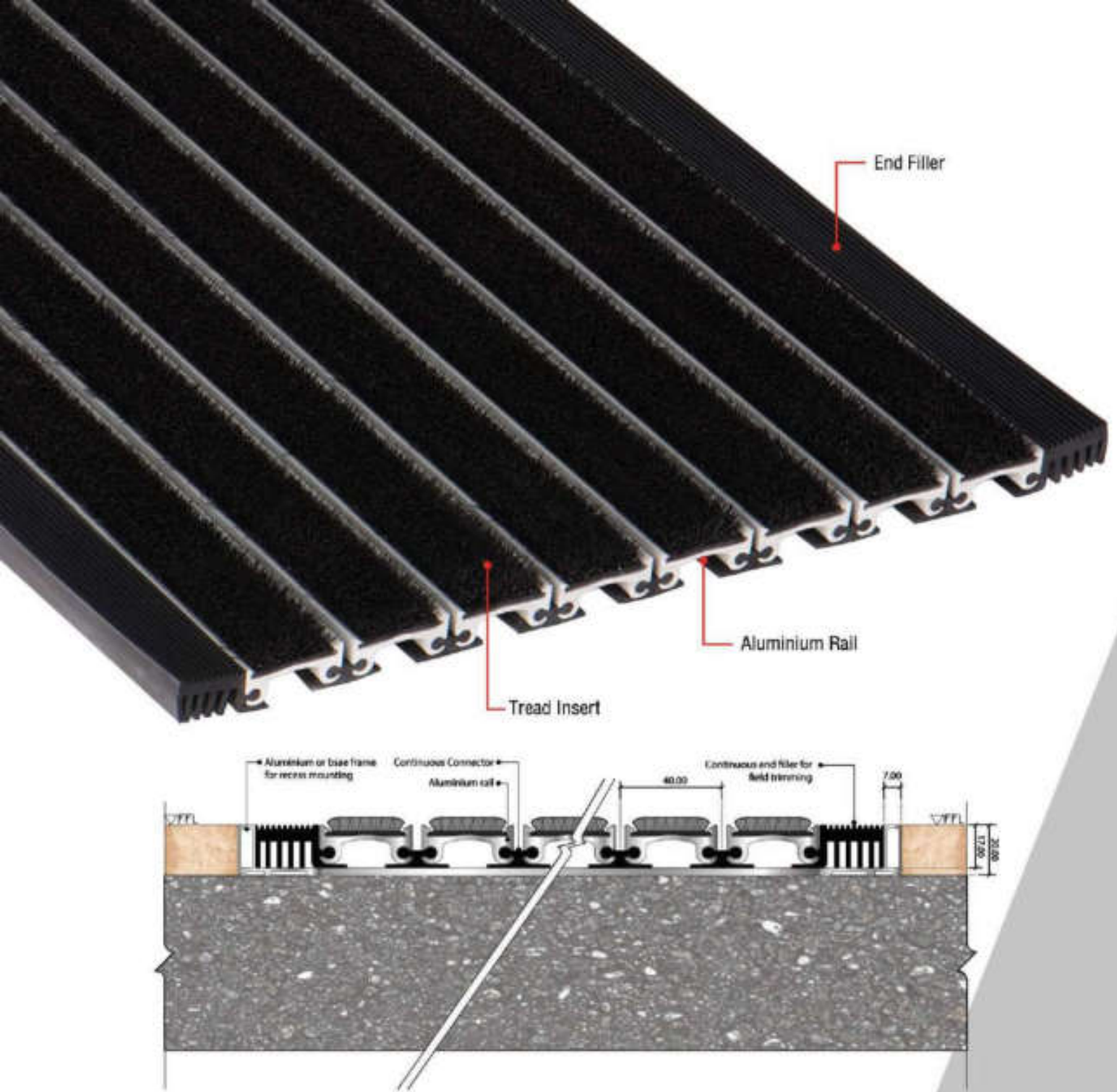
# ALUMAT ST-150

Alumat ST-150 is designed for suit with any building with modern design, dirt stopping capability and be able to improve the aesthetics of building. The mat come with a variety of colors shades in carpet tread and be able to change the Insert material to EPDM, Vinyl, Hard Pile Carpet for outdoor work. All of Alumat ST-150 equipment manufactured from high grade quality, the rail produced from aluminium extrudes while connector rubber also strength when compared with other therefore InnoMat allow to apply in high traffic area. Alumat ST-150 is the perfect solution for office, hotel, shop, airport and any building where is concern in dirt stopping and would like to improve image for the building.



## Product Data

Model	ALUMAT ST-150
Type of aluminium	6063-T5 aluminum alloy (ASTM B221)
Internal mat well dept	15 mm.
Rolling Load	250 kgs. / wheel
Surface Absorption area	85%
Drying Performance	Very high
Scraping Performance	Very high
Carpet Insert	Woven pile fabric carpet strip Heavy Duty carpet solution dyed polypropylene, fibers mono and multi-filament yarns, 8-9 mm. pile height with polypropylene backing.
Rubber Insert	Continuous Vinyl / EPDM insert.
Rubber Connector	Continuous Vinyl / EPDM Cushions and end filler for fine dimension adjustment.
Mat Frame	Aluminum Alloy 6063-T5 clear anodized finish.



# ALUMAT HD-200

Alumat HD-200 is a heavy duty version, HD-200 provide high strength of systems with high load bearing capability when compared with standard. It especially suitable for high traffic area such as shopping centers, hospital and public transport terminal, the mat system developed to remove dirt and water under foot by allow waste to drop through channel between the rails therefore it is easy to clean and maintenance.

Alumat HD-200 available in two differences treads finishes in a variety of color to satisfy users, tread option also provides EPDM / Vinyl, Hard Pile Carpet for outdoor work and multi purpose specific requirement.



## Product Data

Model	ALUMAT HD-200
Type of aluminium	6063-T5 aluminum alloy (ASTM B221)
Internal mat well dept	20 mm.
Rolling Load	300 kgs. / wheel
Surface Absorption area	85%
Drying Performance	Very high
Scraping Performance	Very high
Carpet Insert	Woven pile fabric carpet strip Heavy Duty carpet solution dyed polypropylene, fibers mono and multi-filament yarns, 8-9 mm. pile height with polypropylene backing.
Rubber Insert	Continuous Vinyl / EPDM Insert.
Rubber Connector	Continuous Vinyl / EPDM Cushions and end filler for fine dimension adjustment.
Mat Frame	Aluminum Alloy 6063-T5 clear anodized finish.





■ EPDM / VINYL

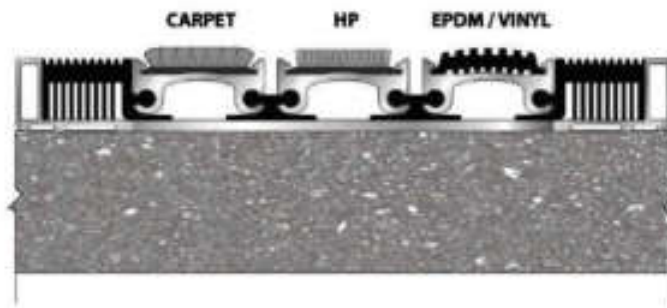
■ Black & White

■ Black



# ALUMAT TREAD OPTIONS

Inno Viva woven pile fabric carpet strips are designed and manufactured to provide an attractive, durable and long lasting component to your entrance mat system. The feature polypropylene yarn that will give years of service under the most demanding conditions. Available in varying pile heights, widths, colors and top quality luxury carpet strips to compliment any architectural design, the closed construction ensures that all debris is captured by the mat surface for a convenient cleaning operation.



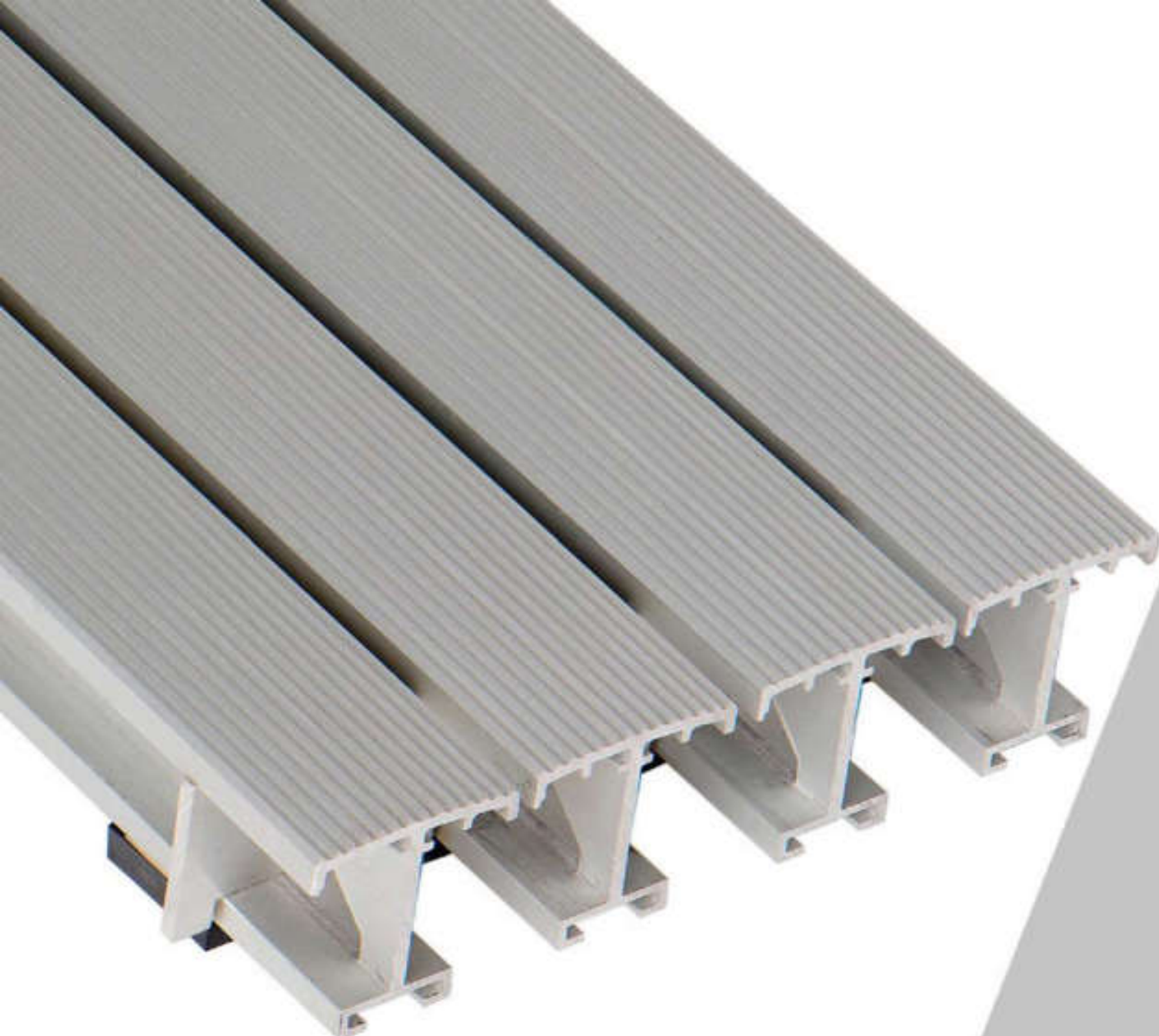
Gray

Black

RED

Brown

INNO**MAT**



# ALU GRID

Alu Grid are deep pit designs, they offer design flexibility and effectiveness in any type of high traffic entrance and be able to create the custom shape of your choice and suitable for outside building area. Mat design to be easily removed collected soil and moisture and allow dirt to drop through channel between the rails.

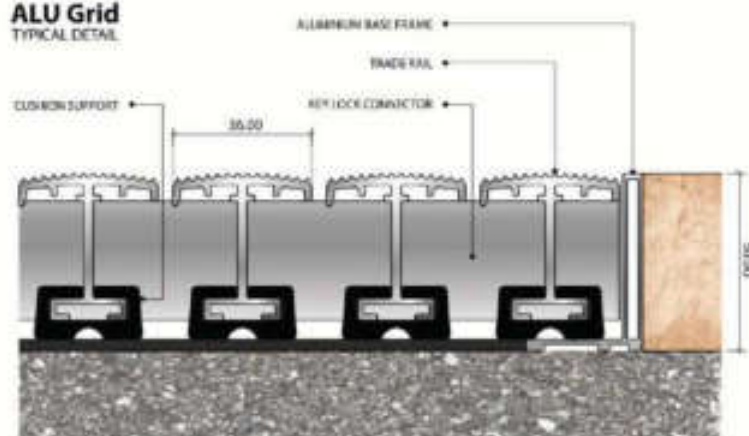
Alu Grid is the perfect solution for outside area, it especially suitable for high traffic area such as shopping centers, hospital and public transport terminal and be able to improve a positive image.



## Technical Details

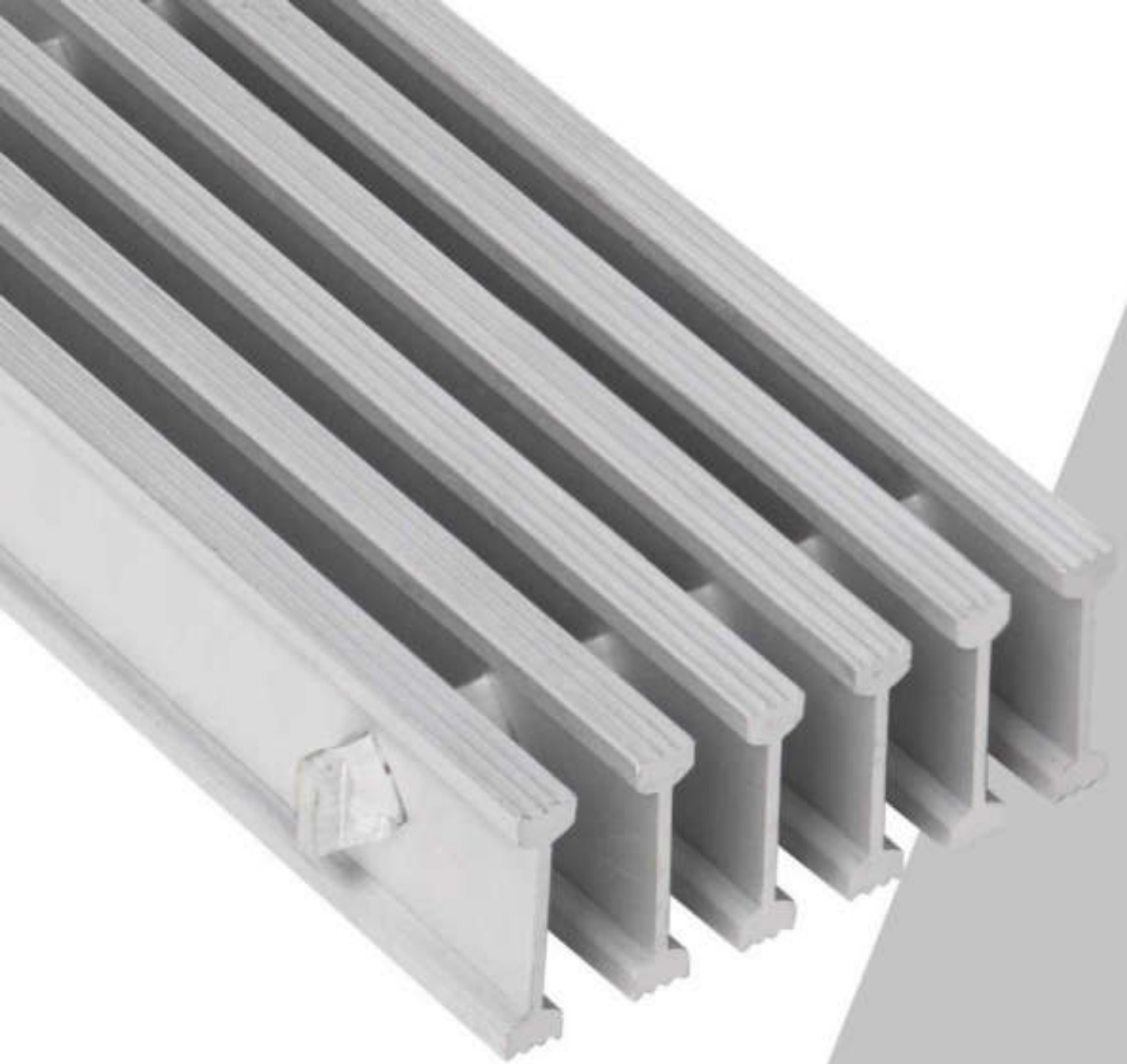


**ALU Grid**  
TYPICAL DETAIL



## Product Data

Model	ALU Grid
Type of aluminium	Serrated Aluminum alloy 6063-T6 Anodized
Internal mat well dept	44.5 mm. / 50 mm. (Include frame)
Rolling Load	250 kgs. / wheel
Surface Absorption area	85%
Drying Performance	Very high
Scraping Performance	Very high
Key Lock Connector	Aluminum alloy 6063-T6 Mill finish.
Mat Frame	Base Frame Aluminium.

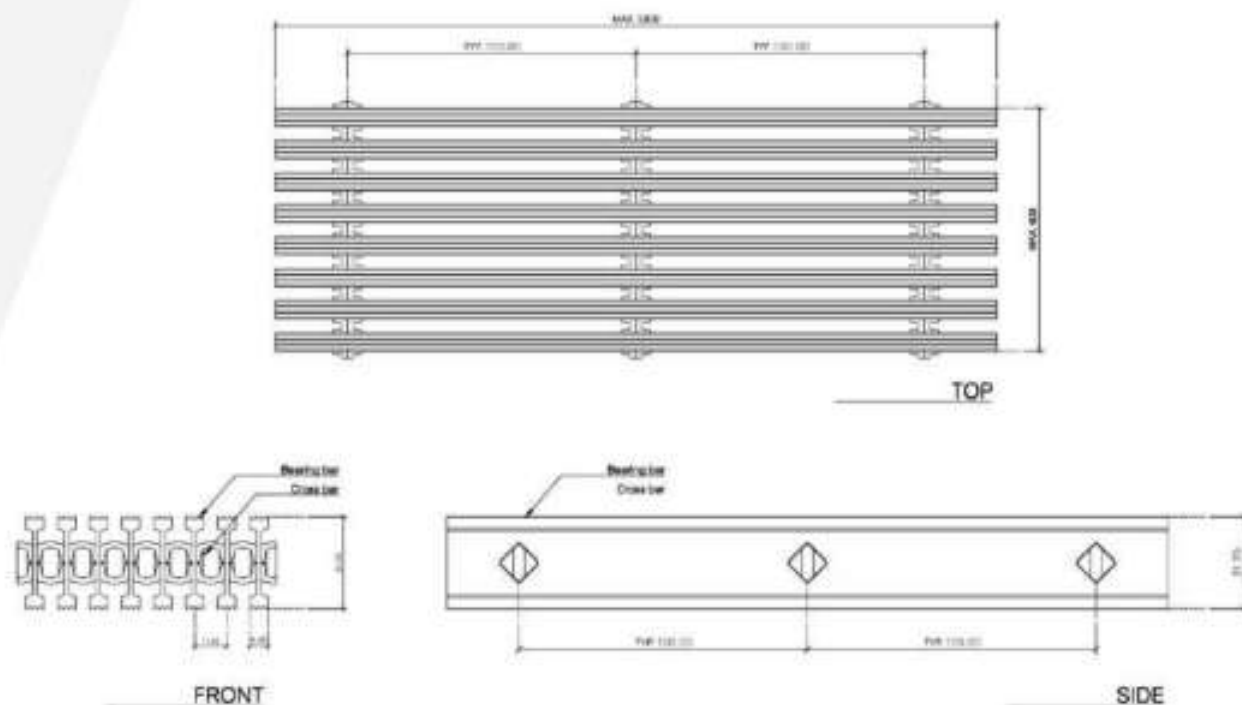


# ALUMINUM GRATING (I-BAR)

Aluminum Grating (I-BAR) สามารถใช้งานได้หลากหลายพื้นที่ เหมาะสำหรับการแบ่งพื้นที่เปียกและแห้งออกจากกัน หรือรองรับน้ำจากส่วนหนึ่งไม่ให้ล้นข้ามไปยังอีกส่วนหนึ่ง สามารถใช้ได้ทั้งภายนอกและภายใน น้ำหนักเบา ไม่เป็นสนิม ยกทำความสะอาดได้ง่าย สามารถใช้ที่ขอบสระว่ายน้ำ หรือปิดครอบรางระบายน้ำ เป็นต้น

## Technical Details

INNO GRATING - SAI						
Name	Panel Width (mm.)	Panel T-D (mm.)	Bearing Bar Size (mm.)	Spacing bearing bar / cross bar	Surface	Open-end no welding
I-BAR Gratings	5850	600	31.75 x 6.35	11.1/100	serrated	Open-end



## Product Data

Model	I-BAR
Type of aluminium	Serrated Aluminium Alloy 6063-T6 Anodized
Internal mat wall dept	31.75 mm.
Drying Performance	Very High
Scraping Performance	Very High
Slot & Opening gap	4.75 mm.
Standard size	Custom made ( Max 0.60 x 5.80 m. for one piece )





Anti-Slip Finish

# WEDGE WIRE STAINLESS GRATING

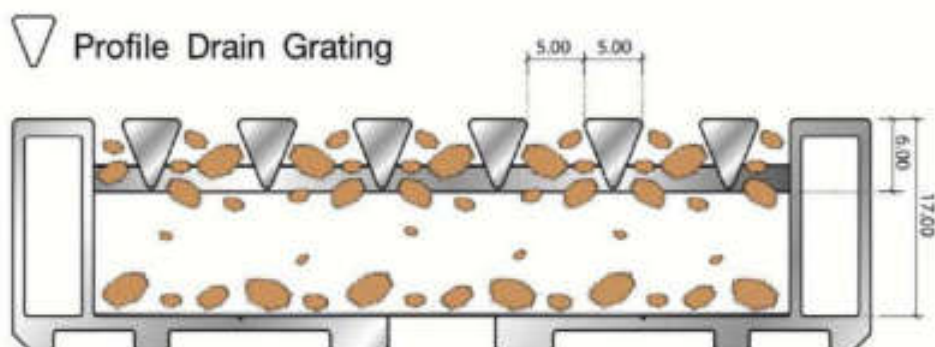
## Product Description

Wedge Wire Stainless Grating ออกแบบและพัฒนาเพื่อตอบสนองต่อความคิดสร้างสรรค์ในการออกแบบทั้งภายในและภายนอกอาคาร Wedge Wire Stainless Grating สามารถใช้งานได้หลากหลายพื้นที่ และมีความเหมาะสมสำหรับการแบ่งพื้นที่เปียกไปยังส่วนที่แห้ง ตัวตะแกรงสเตนเลสผลิตจากเนื้อสเตนเลสที่ได้ออกแบบให้น้ำ และอากาศสามารถไหลผ่านไปได้เป็นอย่างดี จึงสามารถรับน้ำที่เกิดจากการเดินสัญจร และน้ำฝนจากธรรมชาติ Wedge Wire Stainless Grating สามารถผลิตขนาดได้ตามความต้องการ

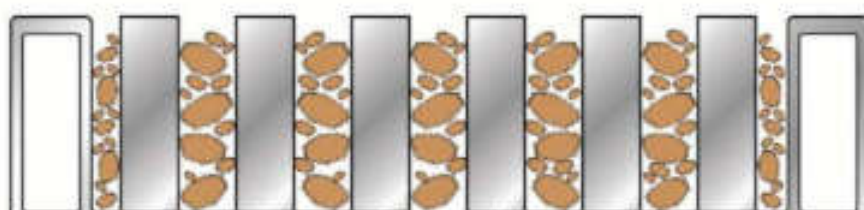
## Product Construction & Features

- ตะแกรงผลิตจากสเตนเลสเกรด 304 หรือเกรด 316
- ถูกออกแบบมาให้สามารถใช้งานได้ทั้งภายในและภายนอกอาคาร
- ตะแกรงสเตนเลสถูกออกแบบมาให้ง่ายต่อการติดตั้งและทำความสะอาด
- ลักษณะของลวดเป็นทรงคลื่น ทำให้เศษวัสดุไม่ติดค้าง

## Technical Details



Ordinary Drain Grating



## Product Data

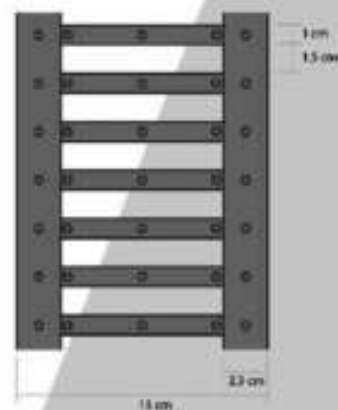
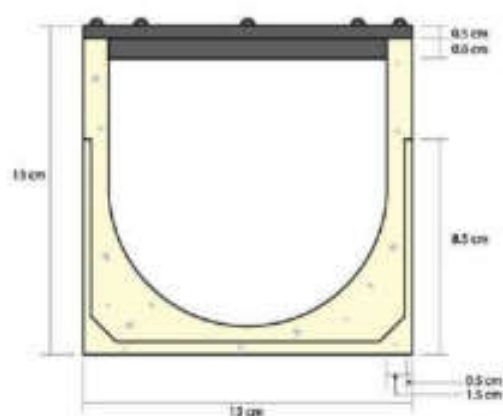
Model	Wedge Wire Stainless Grating
Type of Stainless	Stainless Steel Grated 304 / 316
Internal mat well dept	17 mm.
Drying Performance	Very High
Scraping Performance	Very High
Wire Size	3 x 5 mm. ( GAP 3 mm. ), 5 x 6 mm. ( GAP 5 mm. )
Standard size	Custom made ( Max 1.80 x 1.80 m. for one piece ), 18" x 18"
Mat Frame	Base Frame Aluminium.





# CAST IRON GRATING

CAST IRON



Cast Iron Grating ผลิตจากเหล็กกล้าเหมาะสำหรับงาน Heavy Duty รองรับการใช้งานหนักได้ดี เหมาะสำหรับการแบ่งพื้นที่เปียก และแห้งออกจากกัน หรือรองรับน้ำจากส่วนหนึ่งไม่ให้ล้นข้ามไปยังอีกส่วนหนึ่งวัสดุมีน้ำหนักมาก ถูกออกแบบให้มีการยึดติดที่แข็งแรงไม่หลุดง่าย มีอายุการใช้งานที่ยาวนาน





## Product Data

Model	Cast Iron
Type of material	Cast Iron
Internal mat well dept	13 cm.
Drying Performance	Very High
Scraping Performance	Very High
Slot & Opening gap	Slot 10 mm., Opening Gap 15 mm.
Standard size	13 x 13 x 100 cm.





## Cleaning & Maintenance

### Daily

The carpet need to be cleaned daily, by vacuum dirt on carpet surface and tread rails then user also need to roll up the carpet and vacuum dust in the blocking pit.

### Weekly

User should clean the carpet for weakly or twice weekly, by roll up the carpet and vacuum dirt on carpet surface and tread rails, for area that received a lot of foot traffic, the mat allow user to wet cleaning by roll up the carpet and use detergents to clean, wait until it dry and reinstall back to the right place.

### Damage Repair

If carpet or EPDM tread infills become worn or a change of color scheme is required, the individual inserts can be replaced. In the unlikely event of rails being damaged they can also be replaced, thus saving the cost of total replacement.





## **Inno Viva Co., Ltd.**

859 Soi Piboon-Upatham, Suthisarnvithchai Rd.,  
Samsennok, Huaykwang, Bangkok 10310, Thailand

Tel : 02-274-9620 Fax : 02-274-9621

Email : [admin@inno-viva.com](mailto:admin@inno-viva.com), [sales@innoviva.com](mailto:sales@innoviva.com)

Website : [www.inno-viva.com](http://www.inno-viva.com)

Facebook : [www.facebook.com/innoviva.th](http://www.facebook.com/innoviva.th)